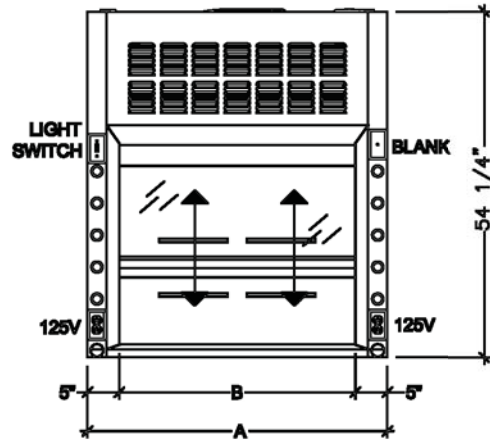
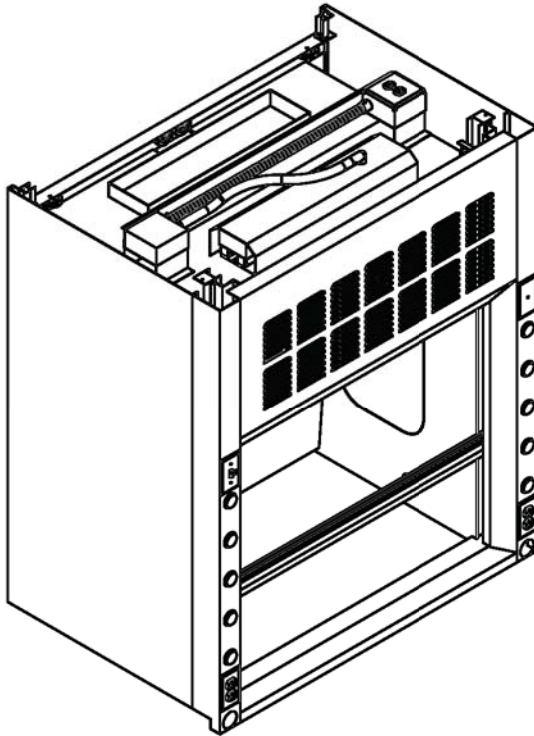


A DEPTH = 31.375" DEEP  
 B DEPTH = 37.375" DEEP  
 C DEPTH = 41.375" DEEP

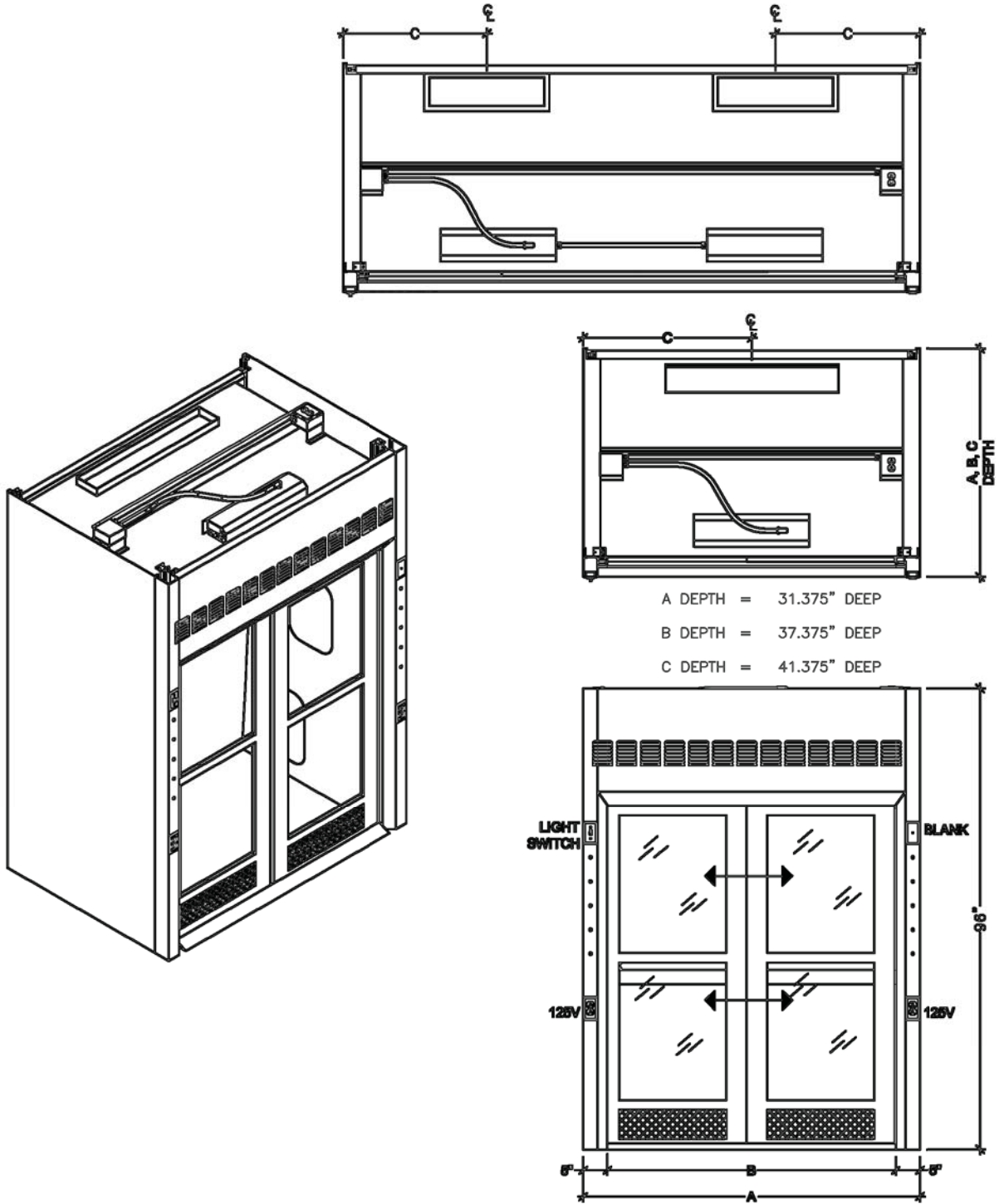


\* All standard walk-in fume hoods are 48" deep (outside dimension). Horizontal sash shown. For variable air volume hoods add - VAV to model number.

CFM DATA CHART (EXHAUST) @ 18" SASH HT.	
HOOD WIDTH	100 LFM (FACE VELOCITY)
35"	312
47"	462
58"	600
70"	750
94"	1050
120"	1350

DIMENSIONAL CHART			
MODEL	A	B	C
5SA35	35"	25"	17.5"
5SA47	47"	37"	23.5"
5SA58	58"	48"	29"
5SA70	70"	60"	35"
5SA94	94"	84"	47"
5SA120	120"	110"	30" (X2)

\* Center Line of collars from either end



\* All standard walk-in fume hoods are 48" deep (outside dimension). Horizontal sash shown. For variable air volume hoods add - VAV to model number.

CFM DATA CHART (EXHAUST)		
HOOD WIDTH	SQ. FT. OPENING	100 LFM @ 18" SASH OPEN
47"	9.57"	475
58"	12.31"	600
70"	15.29	750
94"	21.25	1050
120"	27.68	1375

\* Exhaust based on 50% opening (36.75 ht.)

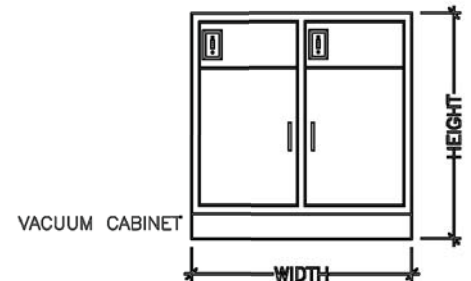
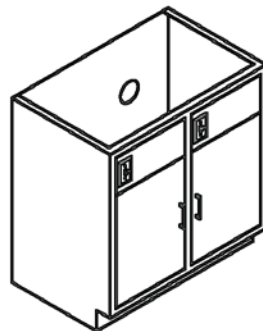
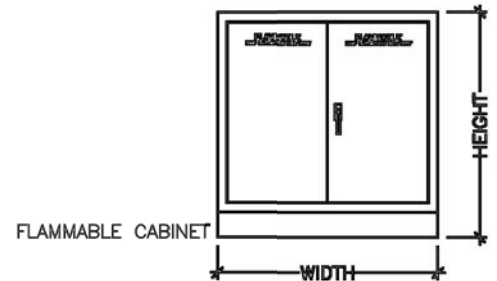
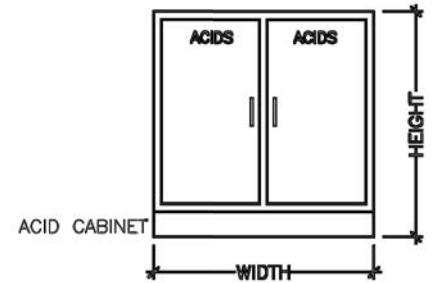
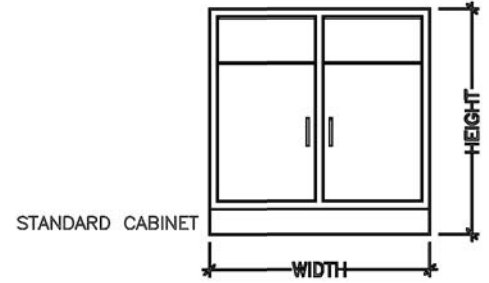
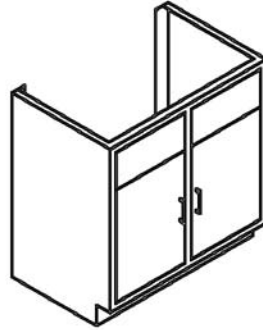
DIMENSIONAL CHART			
MODEL	A	B	C
4SA47AWIH / WIV	47"	38.5"	23.5"
4SA58AWIH / WIV	58"	49.5"	29"
4SA70AWIH / WIV	70"	61.5"	35"
4SA94AWIH / WIV	94"	85.5"	47"
4SA120AWIH / WIV	120"	111.5"	30" (X2)

\* Center Line of collars from either end

WIH = WALK-IN W/ HORIZONTAL DOORS  
 WIV = WALK-IN W/ VERTICAL DOORS

MODEL #	WIDTH	HEIGHT
<b>STANDARD SINGLE-DOOR</b>		
FHB18H	18.125"	35.75"
FHB24H	24.125"	35.75"
<b>STANDARD DOUBLE-DOOR</b>		
FHB35H	35"	35.75"
FHB47H	47"	35.75"
FHB58H	58"	35.75"
<b>ACID (CORROSIVE) SINGLE-DOOR</b>		
ASB18H	18.125"	35.75"
ASB24H	24.125"	35.75"
<b>ACID (CORROSIVE) DOUBLE-DOOR</b>		
ASB35H	35"	35.75"
ASB47H	47"	35.75"
ASB58H	58"	35.75"
<b>FLAMMABLE SINGLE-DOOR</b>		
FSB18H	18.125"	35.75"
FSB24H	24"	35.75"
<b>FLAMMABLE DOUBLE-DOOR</b>		
FSB35H	35"	35.75"
FSB47H	47"	35.75"
FSB58H	58"	35.75"
<b>VACUUM PUMP SINGLE-DOOR</b>		
VAC18H	18.125"	35.75"
VAC24H	24.125"	35.75"
<b>VACUUM PUMP DOUBLE-DOOR</b>		
VAC35H	35"	35.75"
VAC47H	47"	35.75"

\*\* All cabinets also available in low height of 29.75".



#### ACID/CORROSIVE STORAGE CABINET

Designed for under counter and under fume hood applications. Optional 18 ga. steel top available for stand-alone applications. Includes one 18 ga. adjustable shelf. Bottom vent kit available for fume hoods. Adjustable leveling bolts. Storage of phenolic nitric or sulfuric acid not recommended. Acid and/or corrosive outside lettering available.

#### FLAMMABLE/HAZARDOUS WASTE STORAGE CABINET

Meets NFPA, FM, UL standards. Use under counter, under fume hoods or stand-alone applications. Vent kits available for fume hoods. Flammables and/or hazardous waste outside lettering available. Double-wall 18ga. construction w/1.5" air space. Pneumatic self-closing door, chemical-resistant powder coating paint. Single adjustable 18 ga. shelf included. 18 ga. 2" sill at bottom to retain spills. HLF always recommends venting your flammable waste storage cabinet.

#### VACUUM PUMP CABINET

Designed with inner duplex receptacle (to power fan & vacuum pump). Illuminated switch to operate duplex receptacle. Available with open bottom and vac pump trolley in lieu of pull-out shelf. Also included are roll-out shelf (quantity varies depending on cabinet size). Cabinet has exhaust /cooling fan w/power cord.