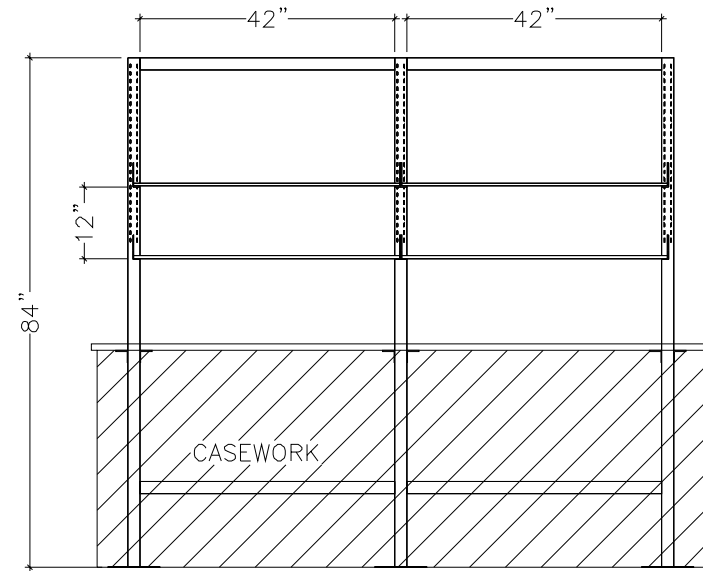
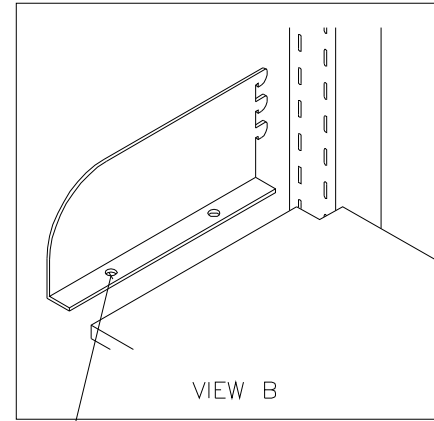


DETAILED ASSEMBLY



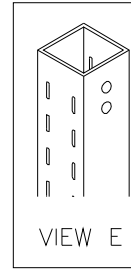
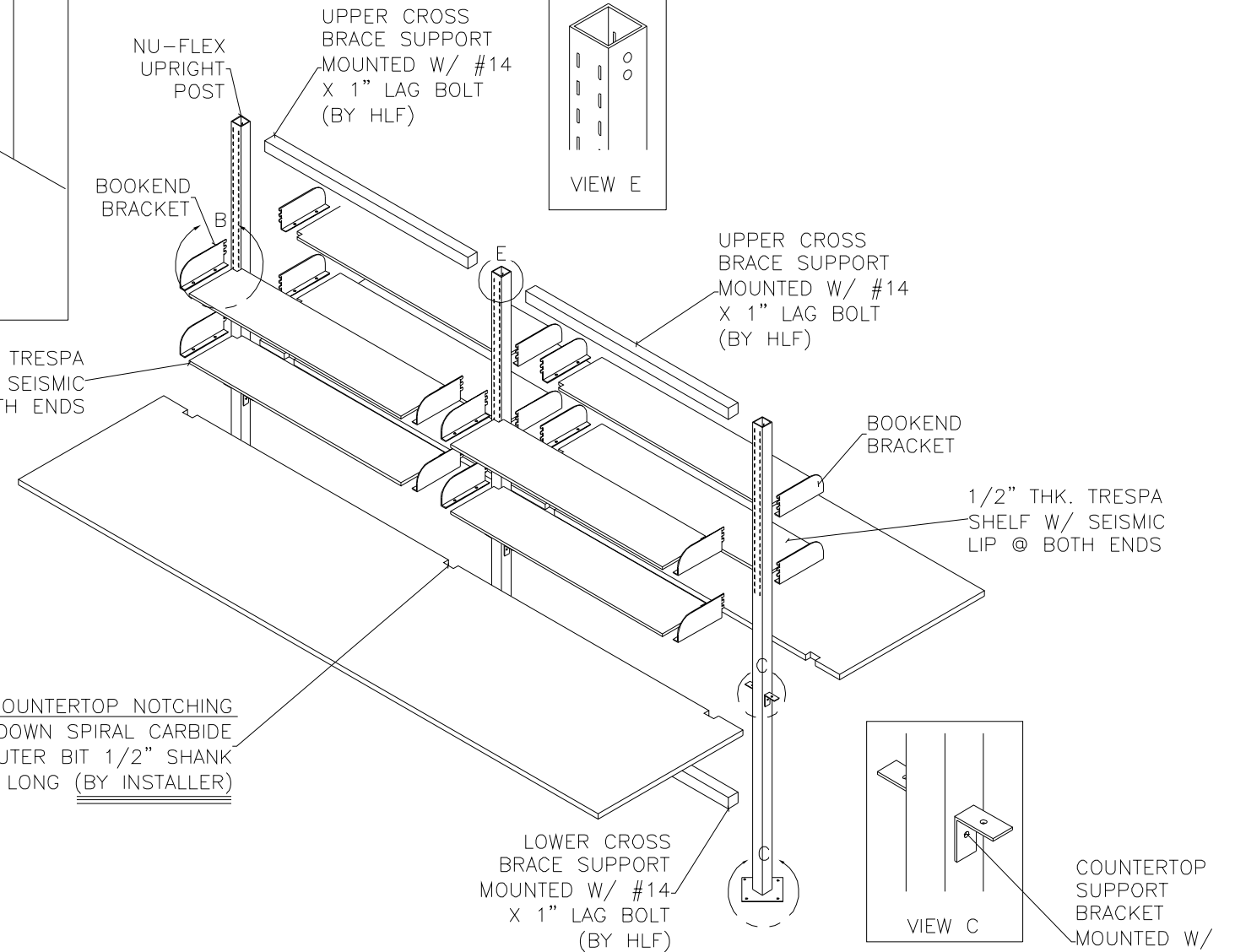
ELEVATION



VIEW B

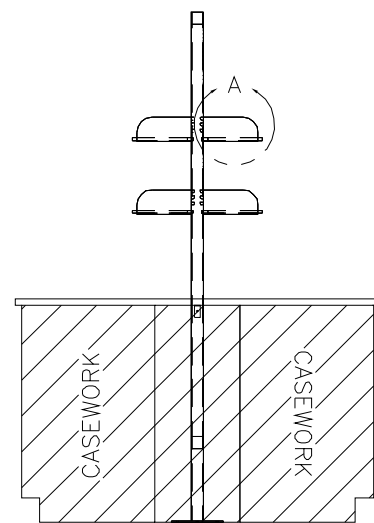
DRILL 1/8" ϕ PILOT HOLE IN BOTTOM OF SHELF & USE #8 X 1/2" SELF TAPPING SCREW TO FASTEN (BY HLF)

1/2" THK. TRESPA SHELF W/ SEISMIC LIP @ BOTH ENDS

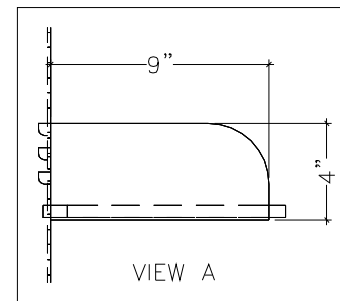


VIEW E

FOR COUNTERTOP NOTCHING UTILIZE "DOWN SPIRAL CARBIDE TIP" ROUTER BIT 1/2" SHANK x 3" LONG (BY INSTALLER)



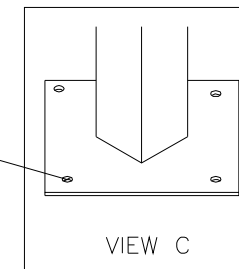
FRONT



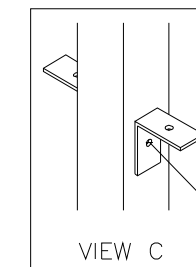
VIEW A

HILTI ANCHOR SYSTEM
UTILIZE MANSORY DRILL BIT & HEX HEAD 1/4" X 2 1/2" ANCHOR BOLT W/ 3/8" WASHER OR EQUIVALENT (BY INSTALLER)

(NOTE: LENGTH OF BOLT MAY BE LONGER DEPENDING ON # OF SHIMS USED TO LEVEL POSTS.)



VIEW C



VIEW C

COUNTERTOP SUPPORT BRACKET MOUNTED W/ #14 X 1" LAG BOLT (BY HLF)



HANSON

HANSON LAB FURNITURE, INC.
814 MITCHELL RD.
NEWBURY PARK, CA 91320
PH: 805/498-3121
FAX: 805/498-1855

NU-FLEX

DRAWN BY	DATE	SCALE	QUOTE NO.	REV. NO.
HT	10/20/04	1/4" = 1'		
SHEET NO:	JOB NO:			
OF				